

Issue of September 3, 1957

Although the fee had been raised earlier, it took time to have a stamp issued for the new rate.



Carried by stage coach
5 recorded



Perfin

Plate numbers used:
25796
25797
25806
25807
25812
25813
28410
28411



Ink smear

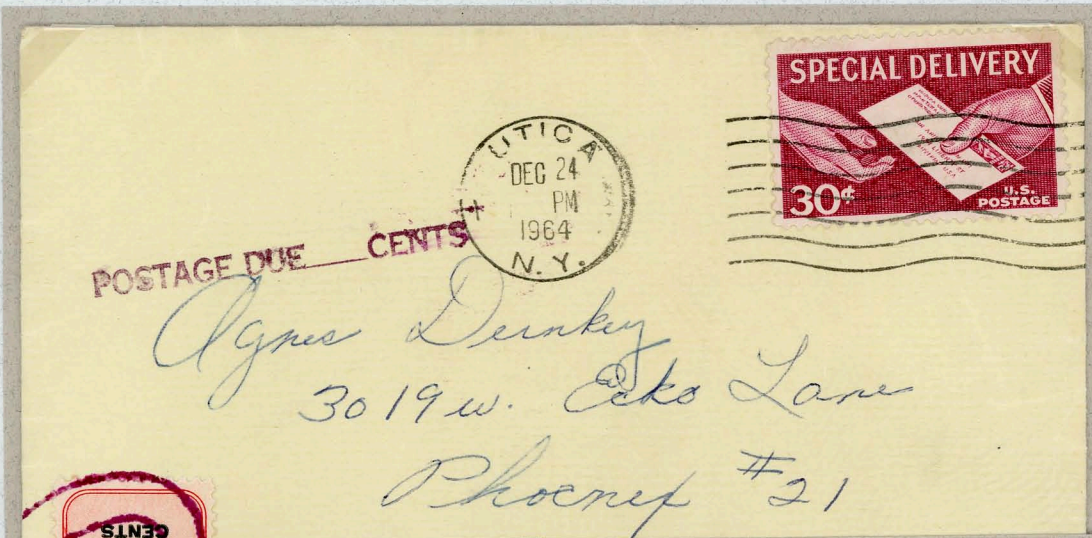


Plate cracks

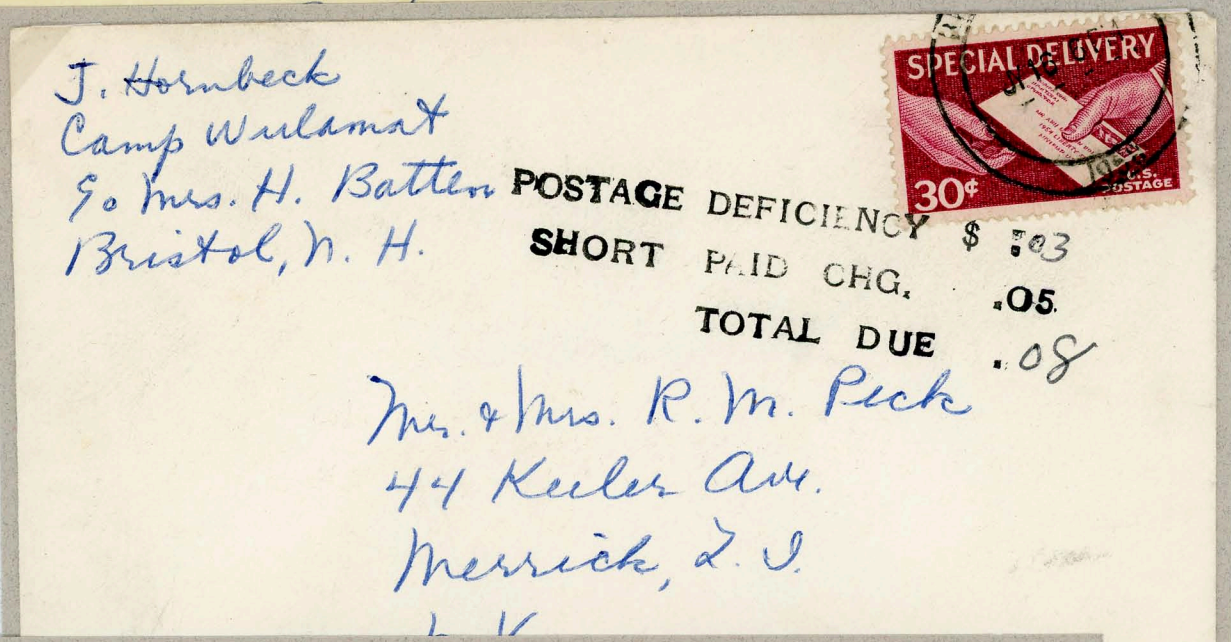


Sheet miscut resulting in gutter snipe showing portion of next sheet

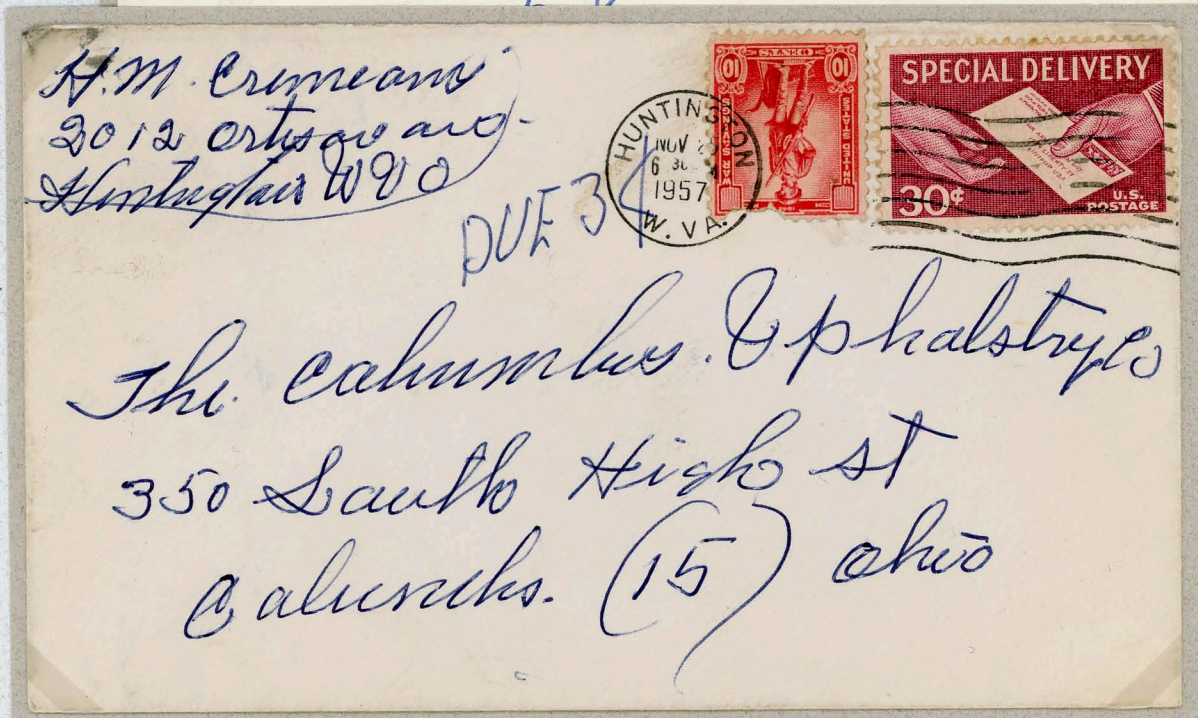
First Class Postage Unpaid



Utica, N.Y. to Phoenix, Az.
December 24, 1964.



Bristol, N.H. to Merrick,
N.Y. January 16, 1968



Huntington, W.V. to Columbus, Oh., November 25, 1957
Postage due 3¢ in manuscript, 10¢ Savings stamp not recognized as postage

Postal Card Service

Bronx to Monticello,
N.Y., December 3,
1963. 4¢ surface rate



Norland, Fl. to
Flushing, N.Y., April 27,
1963. 6¢ airmail rate

Business Reply Mail



Atlantic City, N.J. to Hempstead, N.Y., March 24, 1968
Patron could not take advantage of first class prepayment. Special Delivery fee not included in BRM service

Domestic Service

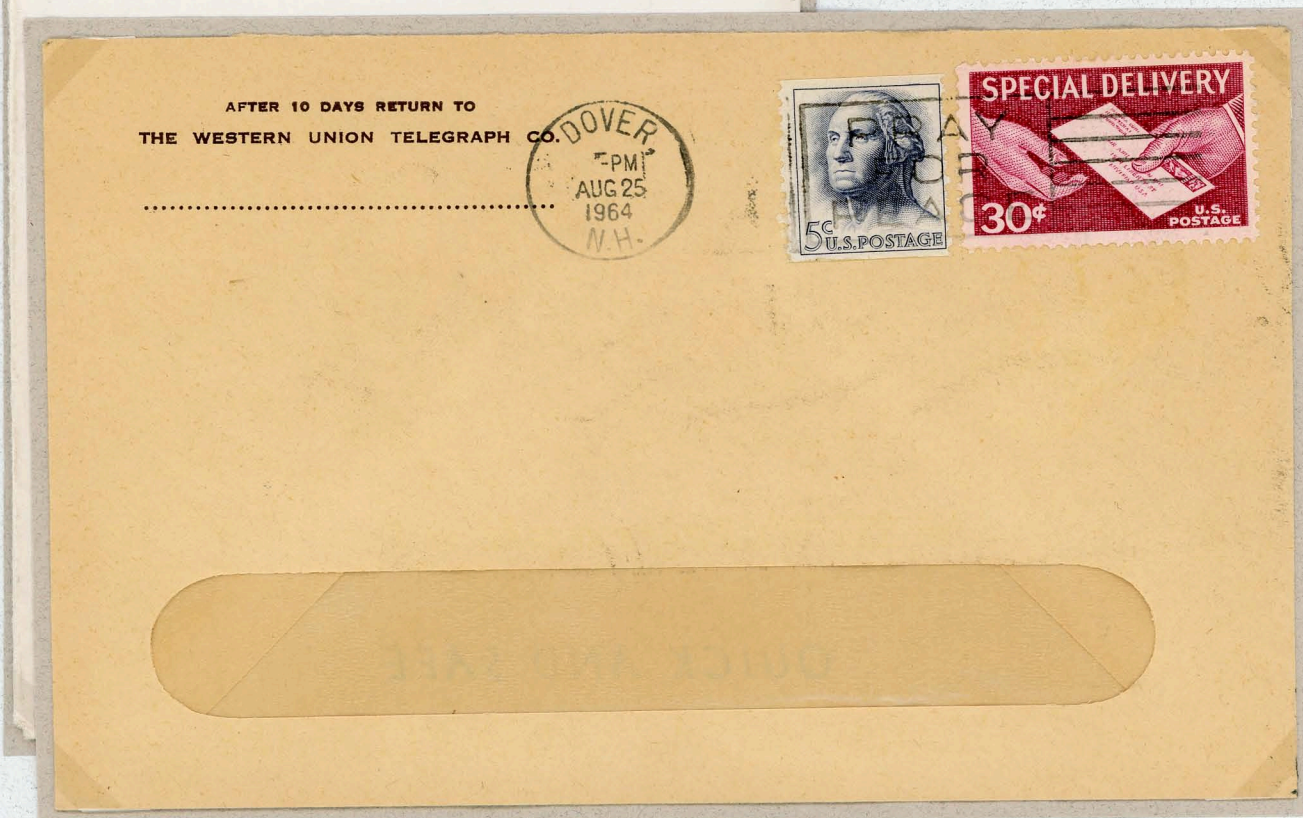


Los Angeles to Santa Monica, Ca., July 27, 1960. Special Delivery stamp with perfin initials "SP" for Southern Pacific Railroad Co.

Parcel Service



Camarillo to San Francisco, Ca., May 13, 1959. Parcel of 8 lbs. (59.5¢ fee rounded up to next cent) and Special Delivery (30¢)



Dover, N.H., August 25, 1964. Telegram mailed via special Delivery to ensure immediate delivery

Official Service



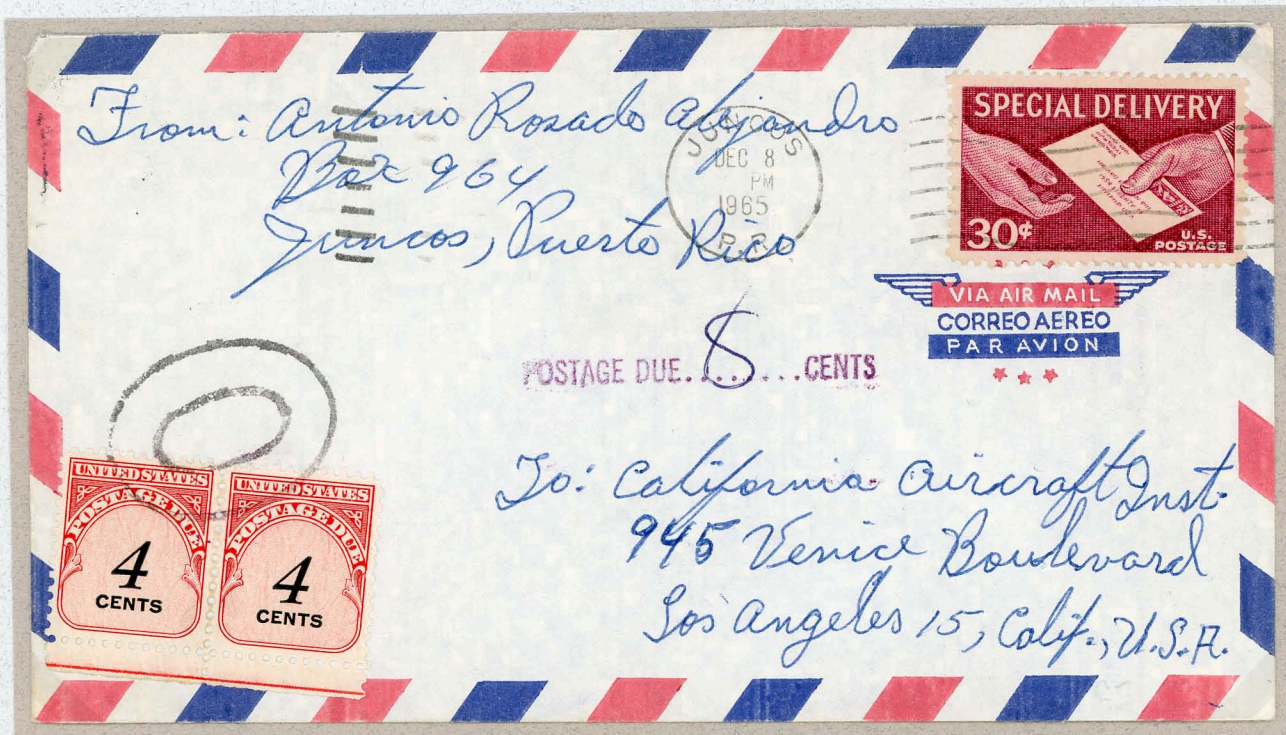
Local Government Service

Chicago, Il. to Washington, D.C., January 16, 1963. Postage due 1¢ as airmail rate was 8¢. Special Delivery stamp with perfin initials "CCo" for Criminal Court

Congress of the United States



Territorial Origin



Juncos, Puerto Rico to Los Angeles, Ca., December 8, 1965. Postage due 8¢ (domestic airmail rate)

Foreign Destination



Airletter and airmail letter rates to Buenos Aires, Argentina

Foreign Destination



New York, N.Y. to Belize City, British Honduras, August 7, 1967

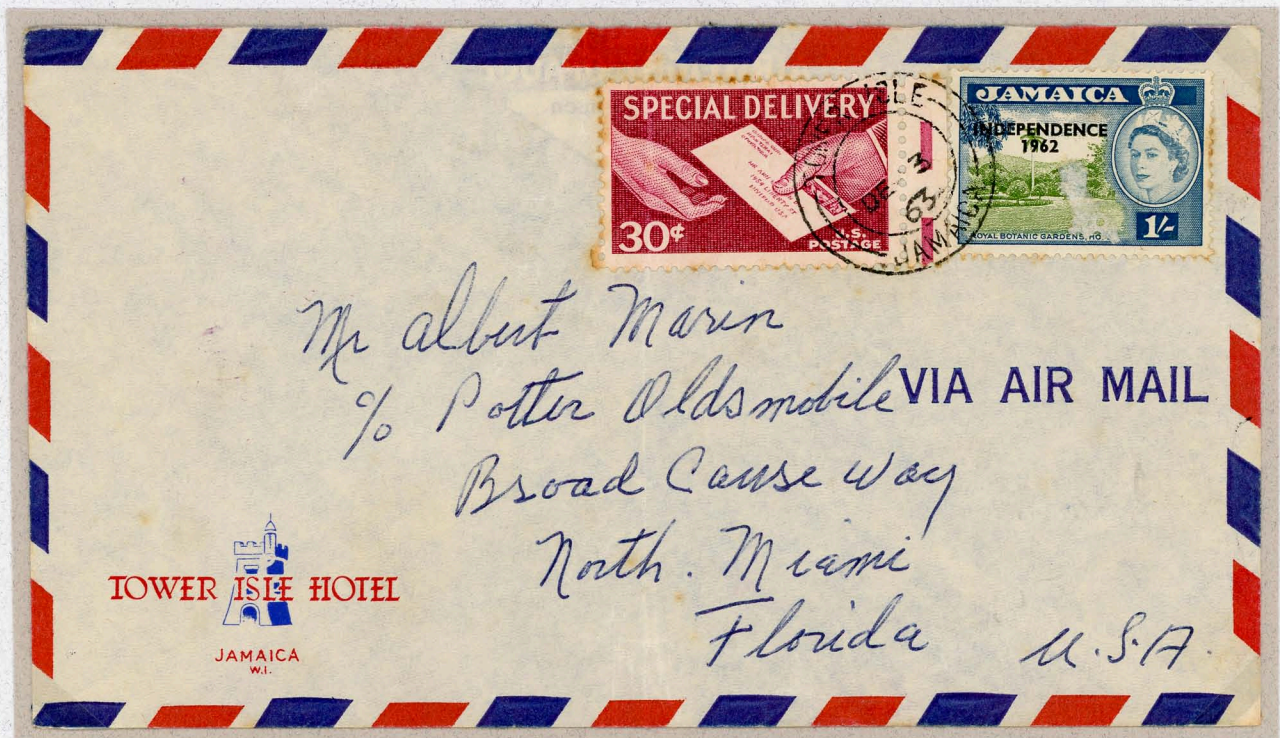


Santa Monica, Ca. to Chatenay, France, September 22, 1967

Foreign Origin



Kingston, Jamaica to River Forest, Il., December 8, 1961
Special Delivery stamp added in Jamaica to ensure immediate delivery in USA



Tower Isle, Jamaica to Miami, Fl., December 3, 1963
Special Delivery stamp added in Jamaica to ensure immediate delivery in USA

Rate Change of July 14, 1969

The Special Delivery fee for first class matter increased to 45 cents for up to two pounds.



Nyack to New York, N.Y.
 November 10, 1969
 Domestic first class rate 6¢
 Special Delivery fee 45¢

Minneapolis, Mn.
 to New York, N.Y.
 July 13, 1969
 Last day of 30¢ rate



Mr. Robert L. Markovits
 Box 744, Wall St. Sta.
 New York
 N. Y. 10005